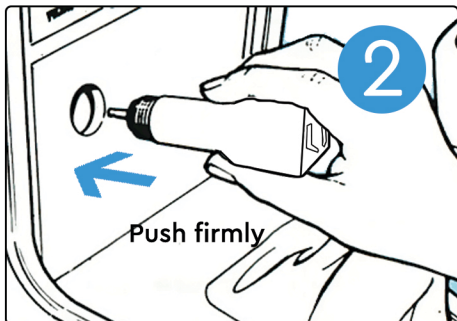
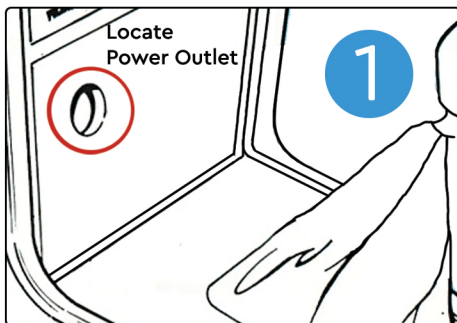


Installation Guide

WARNING

IF YOUR SUBSCRIPTION RUNS OUT, YOUR VEHICLE WILL NOT BE PROTECTED AGAINST THEFT AND TRACKING WILL BE DISABLED DURING THIS PERIOD.

Follow the steps below



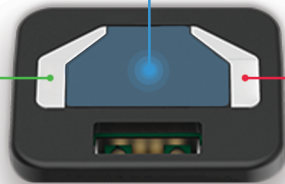
Upon installation the DB4's LEDs will flash between green and red whilst establishing a GPS signal, which can take up to 2 mins. Once complete, the LED's will switch off entirely.

Private/business mode

Switch driving mode by simply pressing the middle button once

Private mileage mode is indicated by a Green LED

Business mileage mode is indicated by a Red LED

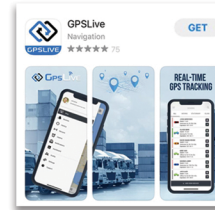


When changing modes by pressing the middle button, the selected mode will be confirmed by flashing of the correlated colour then go off again.

You can find the business and private mileage reports on your GPSLive account under 'Trip Logs'

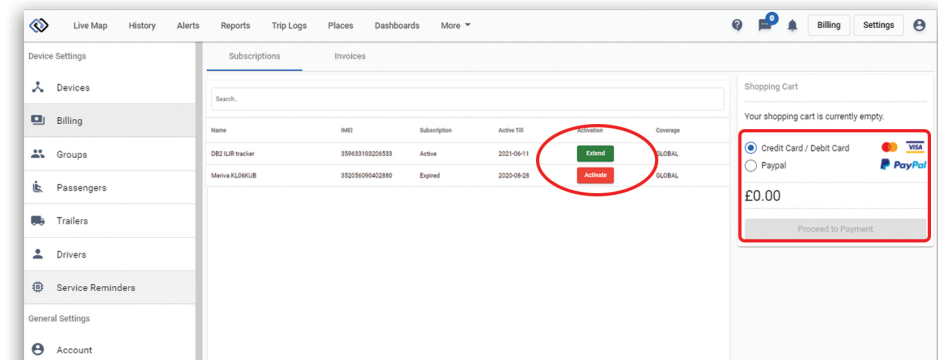
Accessing your account

To access your account please visit: WWW.GPSLIVE.CO.UK or get our free to download app GPSLive on Google Play or Apple App Store.



How do I manage my subscription?

Visit WWW.GPSLIVE.CO.UK and follow the instructions below:



Click on Billing in the top right corner

Click on Subscribe on the device you wish to activate or extend

Proceed to the payment screen

If you have purchased this device with subscription, it will have already been added to your account. You'll receive your login details via email if you're a new user.